

TempScreen Scanner AT300

Detection of temperature / Installation against COVID19 spreading

384x288px resolution

7.8mm F=1.0 lens

1-3 meter distance

Quick Set up and operation

Real-time measurement

Including PC or Laptop

Including blackbody with live temperature correction

Measurement within 0.5s

Audioalarm

Accuracy +/- 0.3°C with blackbody

Visual alarm by software on laptop



17um High-performance sensor



25Hz measurement



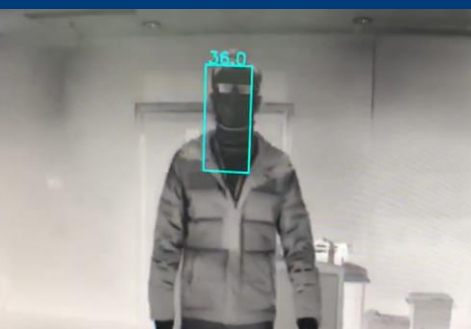
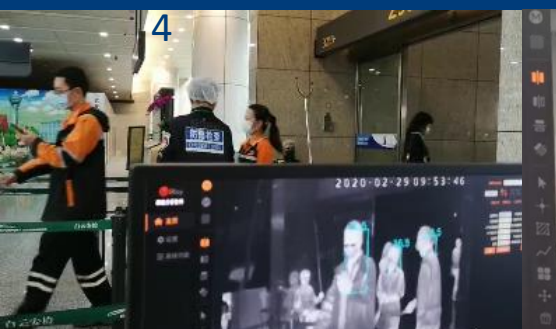
Multi-detection



Photo Recording



Blackbody correction



Technical Data

General

| | |
|-------------|-------------------------|
| Camera name | AT300x |
| Sensor | uncooled Vox FPA Sensor |
| Resolution | 384x288px |

Measurement

| | |
|-------------------|----------------------------------|
| Measurement range | 0°- to 60°C |
| Accuracy | 0.3°C in the range of 33°C- 42°C |
| Measurement tools | Spot, Multipoint, Auto-Tracking |

Connection

| | |
|----------------|-----------------------------------|
| Protocol | TCP, UDP, ICMP, IIGMP, DHCP, RTSP |
| Power and Data | RJ45 Ethernet connection |

Picture Settings

| | |
|---------------------|---------------------------------|
| Brightness, Picture | Manual, Auto 1, AUTO2 |
| Polarity | Black / White and White / Black |
| Color palettes | 18 Different Colour palette |
| Lens | 7.8mm |
| Focus | Manual focus, motor focus |
| Power general | 10-36VDC |
| Power requirement | 3W |
| POE | 15w |
| Size | 55x55x11mm |

Environmental

| | |
|---------------------|---------------|
| Temperature usage | -10° to +60°C |
| Storage temperature | -20°C to 65°C |

| | |
|----------|-----------------------------------|
| Software | SDK and Windows Software included |
|----------|-----------------------------------|



Delivery contents:

Software Windows, Laptop, Ethernet cable 3m, Tripod 2, AT300 thermal camera, blackbody, Manual, POE Power Supply

Content can change without notice /12.3.2020 /