

**InfiRay**



## Eye II Series

Wide display and multifunctional operations will enhance and record the excellent moment of your outdoor activities. Big and Bigger.

**E3PLUS / E3MAX / E6+ / E6PRO / E6+ V2.0 / E6PRO V2.0**

**CE** CONFORMITE  
EUROPEENNE

**RoHS**  
Restriction of  
Hazardous Substances



## High Image Quality

### MATRIX III

The EyeII series is embedded with IRay independently developed high performance VOx detector which allows you to get high detailed thermal images, it will be much simpler to search targets in darkness. The EyeII series has excellent performance in critical temperature range. Matched with Matrix III™ powerful algorithm, it can improve the image contrast automatically, highlight the target and strengthen the image hierarchy, that makes outstanding and sharp image effect.



## HD Micro Display

1280×960 high resolution internal display offers crisp image and vivid colors.

## High Resolution

Two kinds of detector resolutions are available for options: 384×288 & 640×512.



# Components controls



## Built-in Video Recorder and WiFi Connection

The monocular has 8GB build-in memory to store the captured images and video recording and WiFi module which allows 4 connections simultaneously.



iOS



Android



Pad



Laptop

## High Image Frequency

# 50Hz

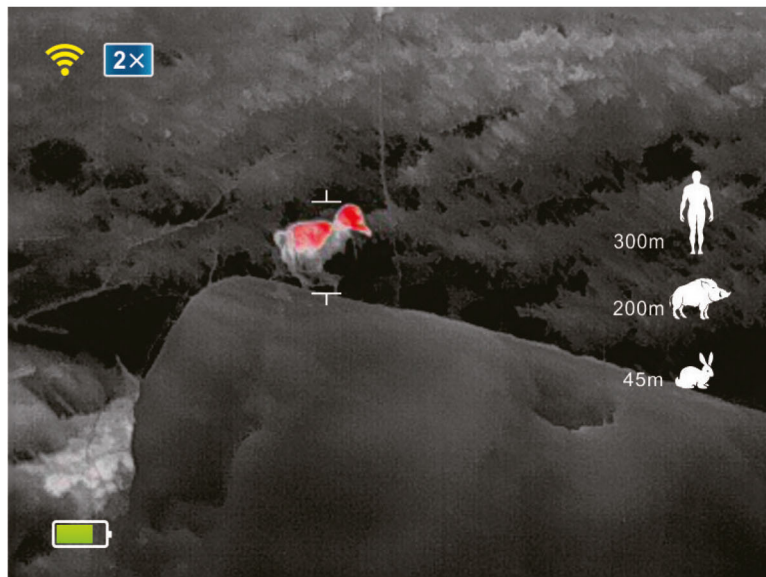
The 50Hz frame rate guarantees you to capture every moment that you want to catch.



# 12 $\mu$ m

## Thermal Imaging Sensor

When using the same lens, 12 $\mu$ m has a longer detection distance than 17 $\mu$ m.



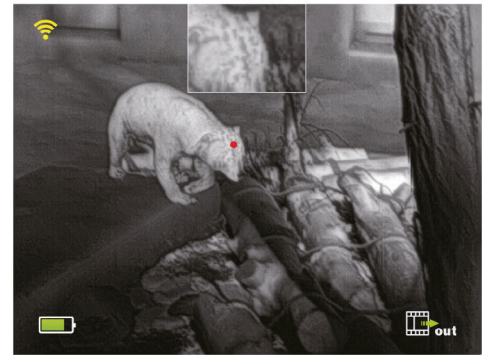
## Stadiametric Rangefinder

Based on estimated heights of targets, users can get the rough distance from the target with the build-in stadiametric rangefinder fast and easy.

## 12x Magnification

Up to 12-time magnification to identify the target easier.

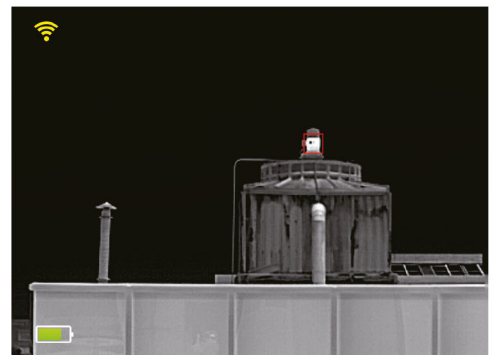
## Picture-in-Picture Function



Picture-in-Picture improves accuracy by providing a 2x magnified image of the reticle area at the top of the display. It helps to zoom in on a target while retaining the rest of the field of view visible.

## Hot Target Tracking

Tracking the hottest spot in the scene automatically and discovering the target quickly.





# 5 Color Palettes

The Eye II series provides more than 5 color palettes for true colorized temperature mapping, including "white hot" "black hot" "red hot" "color" and "hot target highlight". Switching between different color palettes is fast and easy.









white hot

black hot

red hot

color

hot target highlight

Model						
	E3Plus	E3Max	E6+	E6Pro	E6+ V2.0	E6Pro V2.0
Detector Resolution, pixels	384×288			640×512		
Pixel Size, μm	17				12	
NETD, mK	≤50					
Frame Rate, Hz	50					
Objective Lens, mm	25	35		50	35	50
Field of View	14.9°×11.2°	10.7°×8°	17.7°×13.3°	12.4°×9.3°	12.5°×10.0°	8.8°×7.0°
Display Resolution, pixels	1280×960					
Magnification, ×	1.75-7.0	2.45-9.8	1.47-5.88	2.1-8.4	2.08-8.32	2.97-11.88
Max. Battery Life, h (Power saving mode)	4.5		4		6	
Dimension, mm	181×65×64	186×65×64	188×65×64	202×65×64	188×65×64	202×65×64
Weight, g	<450			<520	<450	<520
Detection Range, m (Target size:1.7m×0.5m, P(n)=99%)	916	1283		1833	1818	2597