



### Built-in Accelerometer and Digital Compass

Built-in accelerometer and digital compass improves accuracy by precisely identifying cant and angles.



Compass



Msensor

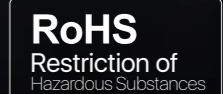
Model	 FL 25R	 FH 25R
Detector Resolution	384×288	640×512
Pixel Size, μm	12	
Frame Rate, Hz	50	
Objective Lens, mm	25	
Field of View	10.5°×7.9°	17.5°×14.0°
Display Resolution	1280×960 LCOS	
Laser Rangefinder Range, m	Max 600±1	
WiFi	✓	
Recorder, G	16	
Compass & Msensor	✓	
E-zoom	×1 ×2 ×3 ×4	
Max. Battery Life, h	6	
Dimension, mm	70×52×130	
Weight, g	320	
Detection Range, m (Target size: 1.7 m×0.5 m, P(n) = 99%)	1298	



## Finder Series

The Finder series products are light and easy to carry, especially suitable for one-handed operation that can be put in a pocket anytime and anywhere. The compact design makes the Finder the best choice for outdoor investigation.

**FL 25R / FH 25R**





# IP66

## Waterproof Rated

IP66 waterproof rating is used for protection from heavy rainfall, snow or other situations.



### Integrated Laser Rangefinder

# 600 m

The Finder series has a built-in laser ranging module, which helps to quickly and accurately capture and display the target distance. The ranging accuracy is  $\pm 1$  m and the maximum ranging distance is 600 m. It provides both single ranging and continuous ranging modes. Continuous ranging can be quickly activated to adapt to the constantly changing distance of the observed object.



### High Image Quality

The advanced image processing ability of the InfiRay detector, which has high performance electronics and optimized infrared optics, creates excellent image clarity and provides better detection and classification, both in day and night.

### Long Detection Range

# 1298 m

The powerful objective lens combined with a 12  $\mu$ m professional grade thermal imaging sensor provides exceptional detection capabilities.



# 12 $\mu$ m

## Thermal Imaging Sensor

High performance 12  $\mu$ m pixel pitch detectors are embedded.

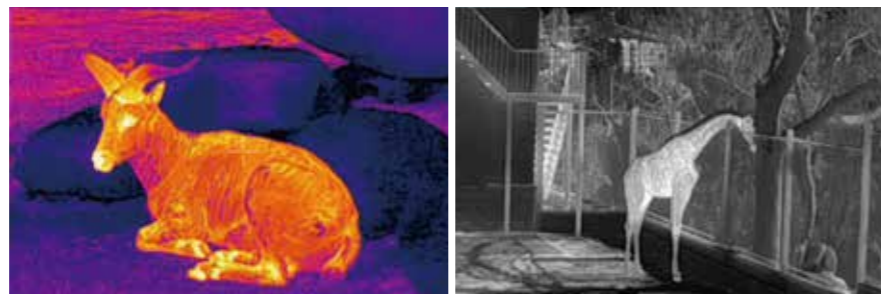
### High Image Frequency

# 50 Hz

The 50 Hz refresh rate guarantees that you will capture every moment that you are interested in.

### HD Micro Display

1280x960 high-resolution internal display offers sharp image and vivid colors.

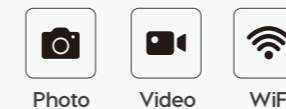


### Pocket Machine

The compact size and light weight makes it easy to carry and operate with one hand. It can be put into the pocket anytime and anywhere. The Finder weighs only 320 g, which is lighter than conventional rangefinders, but much more powerful.

### Built-in Video Recorder and WiFi Connection

16 GB internal storage provides 24 hours of video recording capability, or approximately 20,000 images of photo storage. WiFi mode allows for up to 4 connections simultaneously.



### Infrared Sensor Switch

By sensing the reflection, the infrared sensor switch control the display on and off automatically which saves energy and extends the device's operation time. It also has the advantage of high sensitivity, strong anti-interference ability and stable working performance.